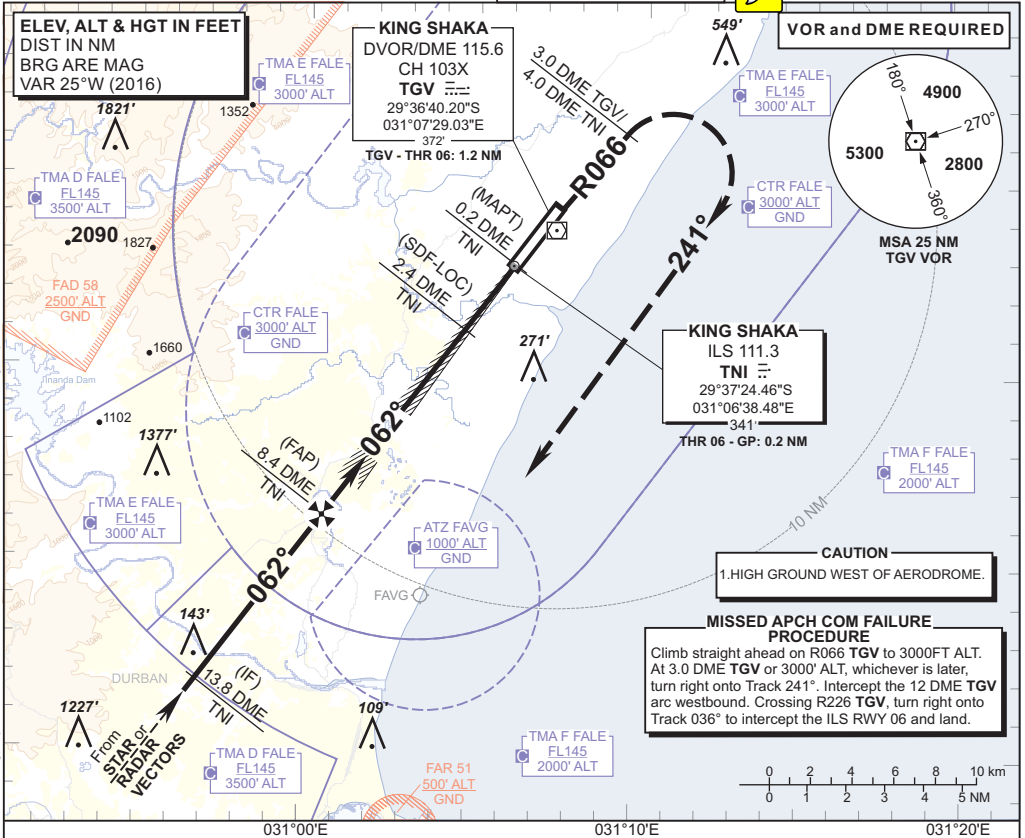


INSTRUMENT APPROACH CHART

AERODROME ELEV 304'
 HEIGHTS RELATED TO
 THR RWY 06 - ELEV 287'

RADAR APP 125.75
 TWR 118.45
 GND 121.65
 ATIS 127.00

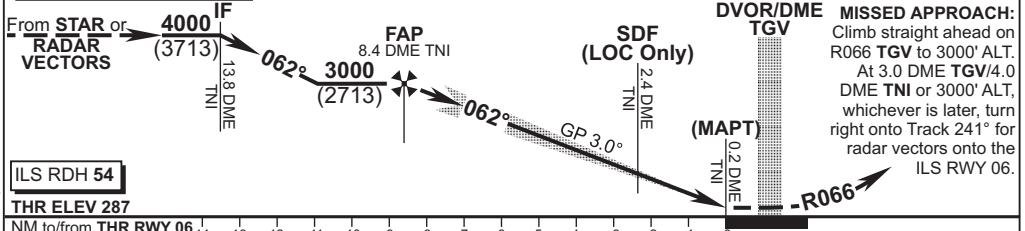
DURBAN
 (KING SHAKA INTERNATIONAL)
ILS Z RWY 06 CAT II
 CAT A - D



TNI ILS/DME	8.4	8	7	6	5	4	3	2.4	2	1
ADVISORY ALT (HGT)	3000 (2713)	2880 (2593)	2550 (2263)	2230 (1943)	1910 (1623)	1580 (1293)	1260 (973)	1060 (773)	930 (643)	610 (323)

TRANSITION ALT 5500
TRANSITION LEVEL ATC

INA ALT: via STAR or RADAR VECTORS



ILS RDH 54
THR ELEV 287
 NM to/from THR RWY 06

OCA (H)		A	B	C	D/DL	GS	KT	80	100	120	140	160
Straight-in Approach	With 2.5% Missed APCH Gradient	CAT I 946 (659)	946 (659)	946 (659)	952 (665)	FAP to THR	M:S	6:10	4:56	4:07	3:31	3:05
	GP INOP	1180 (893)	1180 (893)	1180 (893)	1180 (893)	Rate of descent	FPM	431	539	647	755	863
	With 3.0% Missed APCH Gradient	CAT I 487 (200)	487 (200)	487 (200)	497 (210)	NOTE:						
	GP INOP	730 (443)	730 (443)	730 (443)	730 (443)	1. PROCEDURE ONLY APPLICABLE VIA STAR OR RADAR VECTORS.						
Circling: AD ELEV		1000 (696)	1000 (696)	1270 (966)	1350 (1046)	2. In the event of Radio Communication Failure complete the turn on to the ILS and complete the ILS/LOC RWY 06 approach and land RWY 06.						
							3. Circle to land at the discretion of the pilot in command.					

CHANGE: OCA(H) Advisory ALT Table/VAR